

Relação do aço

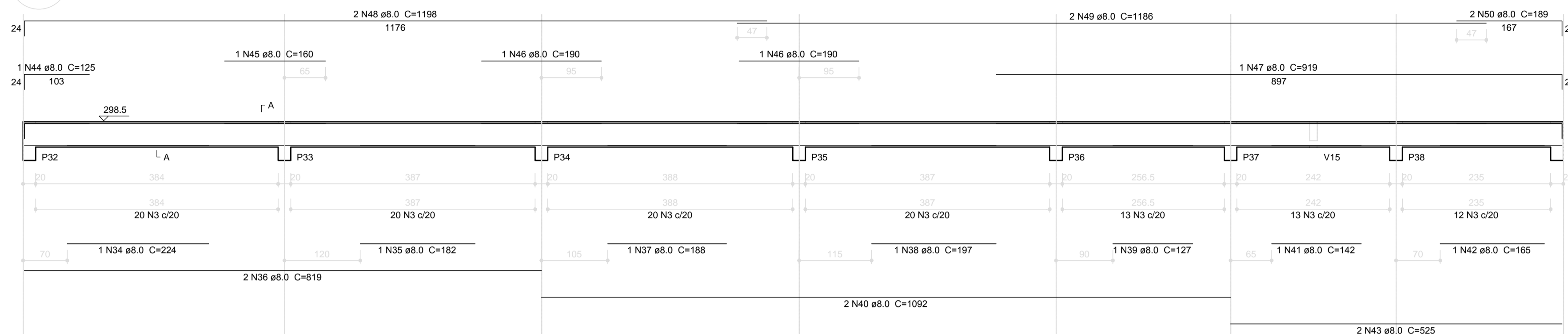
AÇO	N	DIAM (mm)	QUANT (Barras)	UNIT (cm)	C.TOTAL (cm)
CA60	1	5.0	526	100	52600
CA50	2	5.0	108	80	8640
CA50	3	5.0	198	116	22968
CA50	4	6.3	3	71	213
CA50	5	8.0	1	410	410
CA50	6	8.0	10	831	8310
CA50	7	8.0	6	823	4938
CA50	8	8.0	2	814	1628
CA50	9	8.0	2	245	490
CA50	10	8.0	4	220	880
CA50	11	8.0	2	1200	2400
CA50	12	8.0	1	733	733
CA50	13	8.0	8	1198	9584
CA50	14	8.0	2	1195	2390
CA50	15	8.0	2	198	396
CA50	16	8.0	1	402	402
CA50	17	8.0	1	225	225
CA50	18	8.0	1	1065	1065
CA50	19	8.0	2	537	1074
CA50	20	8.0	14	193	2702
CA50	21	8.0	14	221	3094
CA50	22	8.0	10	173	1730
CA50	23	8.0	10	193	1930
CA50	24	8.0	2	806	1612
CA50	25	8.0	1	240	240
CA50	26	8.0	1	215	215
CA50	27	8.0	1	726	726
CA50	28	8.0	2	1193	2386
CA50	29	8.0	2	196	392
CA50	30	8.0	1	617	617
CA50	31	8.0	2	535	1070
CA50	32	8.0	14	623	8722
CA50	33	8.0	14	663	9282
CA50	34	8.0	2	224	448
CA50	35	8.0	2	182	364
CA50	36	8.0	6	819	4914
CA50	37	8.0	1	188	188
CA50	38	8.0	1	197	197
CA50	39	8.0	1	127	127
CA50	40	8.0	2	1092	2184
CA50	41	8.0	1	142	142
CA50	42	8.0	1	165	165
CA50	43	8.0	2	525	1050
CA50	44	8.0	2	125	250
CA50	45	8.0	3	160	480
CA50	46	8.0	3	190	570
CA50	47	8.0	1	919	919
CA50	48	8.0	4	1196	4784
CA50	49	8.0	2	1186	2372
CA50	50	8.0	2	189	378
CA50	51	8.0	1	218	218
CA50	52	8.0	1	183	183
CA50	53	8.0	1	100	100
CA50	54	8.0	2	531	1062

Resumo do aço

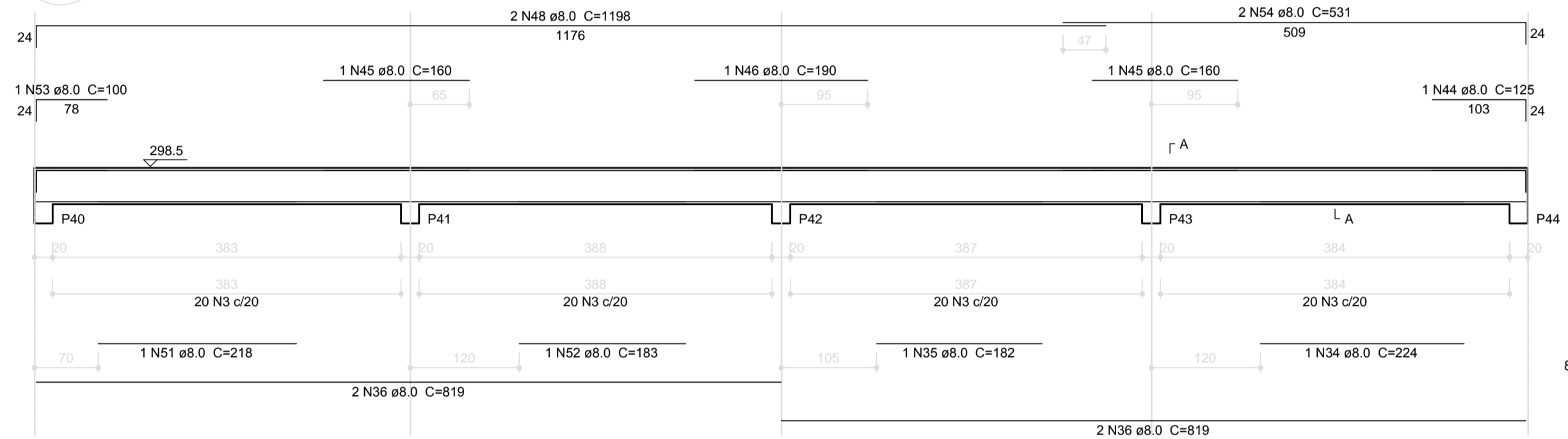
AÇO	DIAM (mm)	C.TOTAL (m)	PESO + 10% (kg)
CA50	6.3	2.2	0.6
CA50	8.0	907.5	393.9
CA60	5.0	842.1	142.8
PESO TOTAL (kg)			537.3
CA50			394.4
CA60			142.8

Volume de concreto (C-25) = 10.09 m³
Área de forma = 172.26 m²

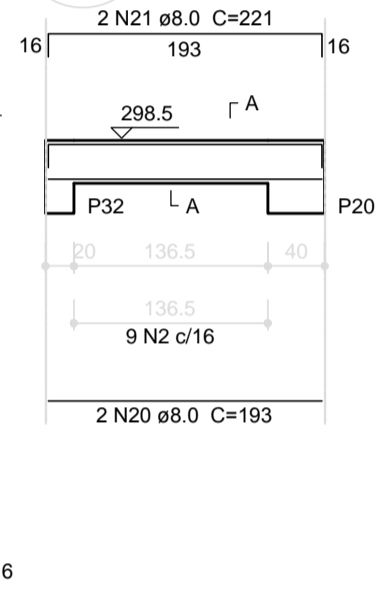
V5
ESC 1:50



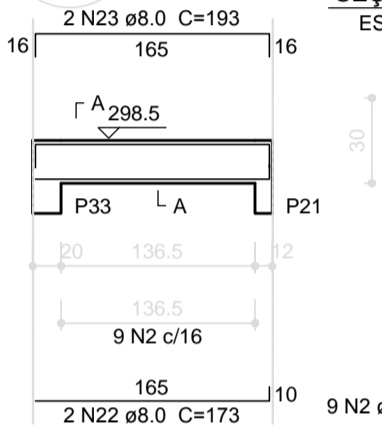
V6
ESC 1:50



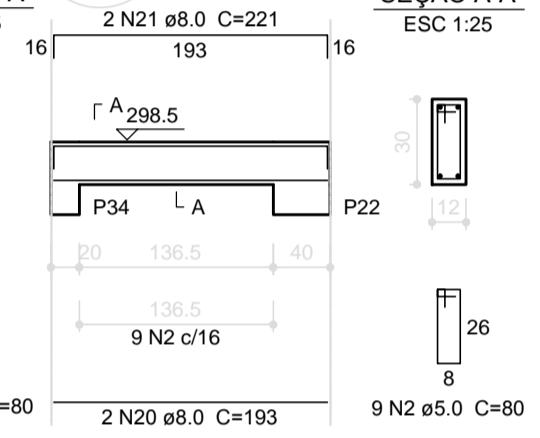
V7
ESC 1:50



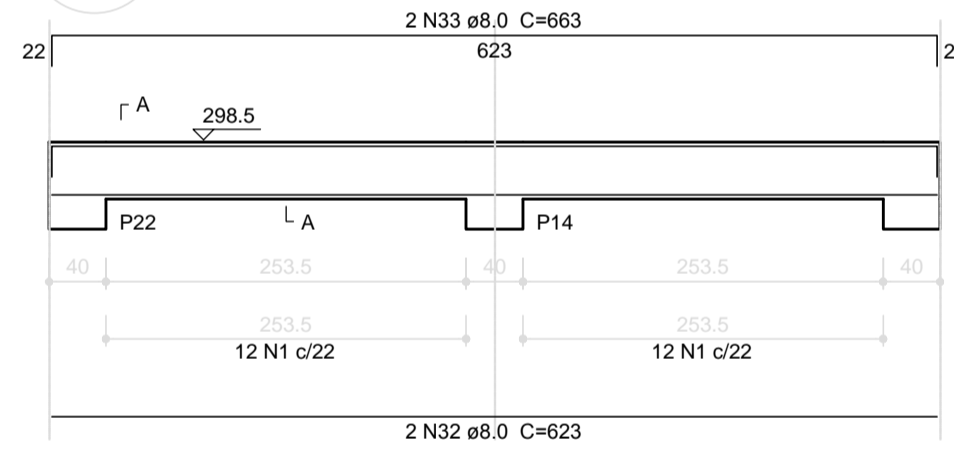
V9
ESC 1:50



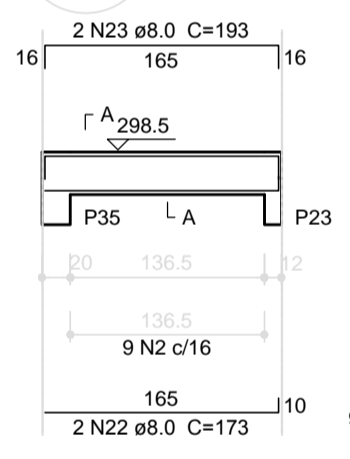
V10
ESC 1:50



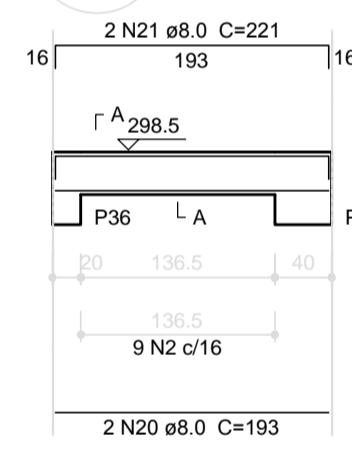
V11
ESC 1:50



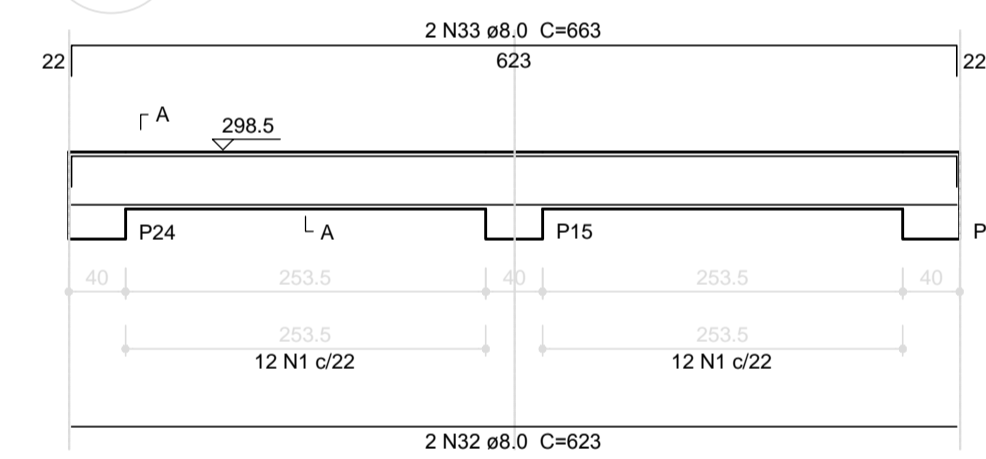
V12
ESC 1:50



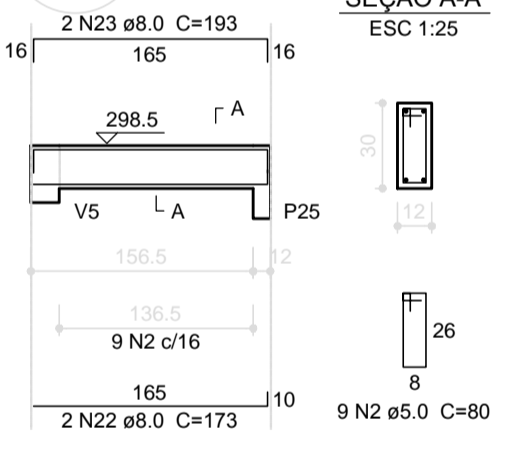
V13
ESC 1:50



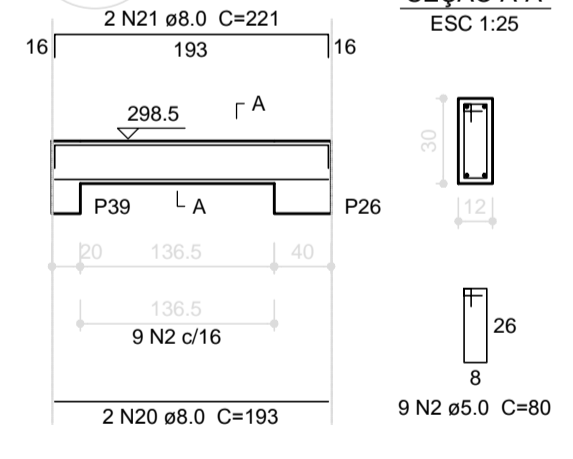
V14
ESC 1:50



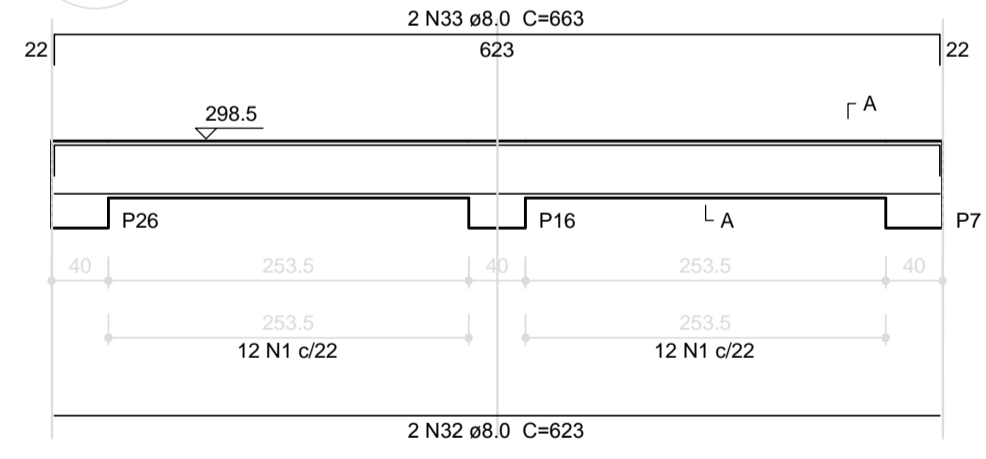
V15
ESC 1:50



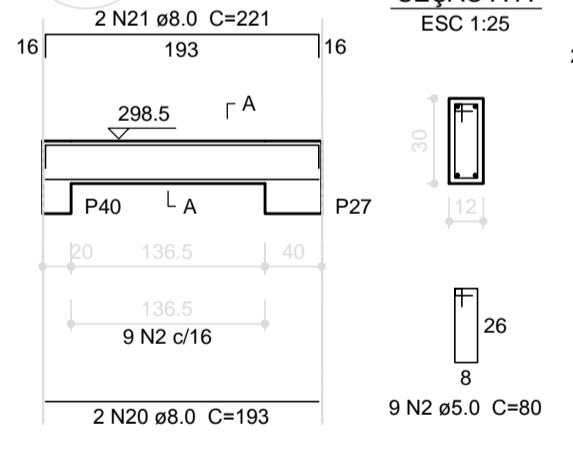
V16
ESC 1:50



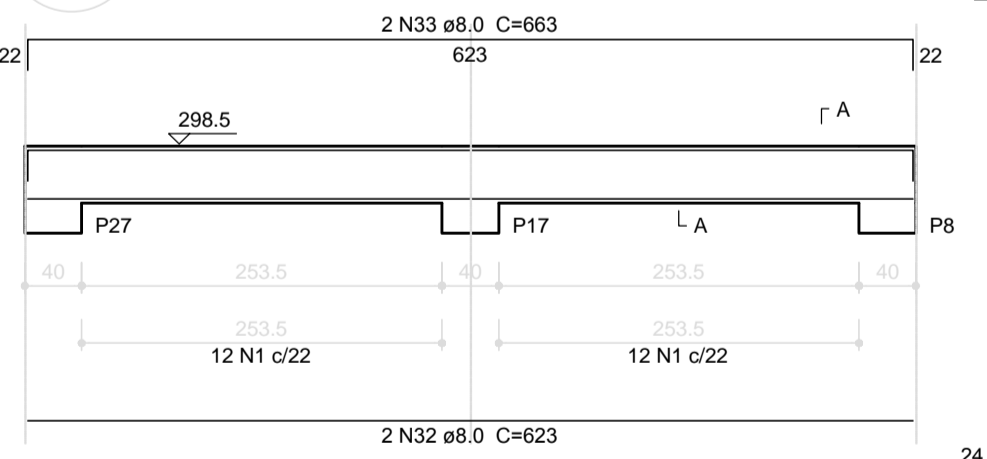
V17
ESC 1:50



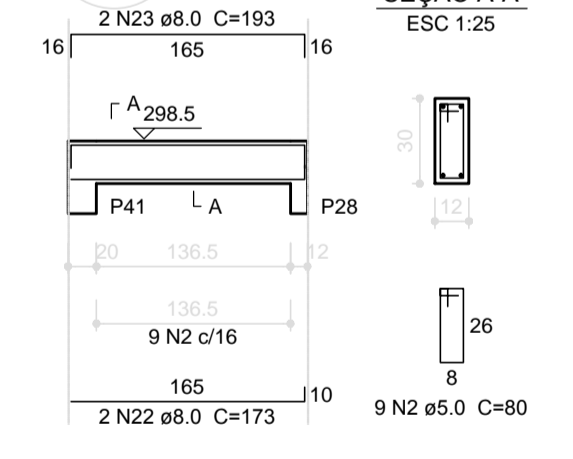
V18
ESC 1:50



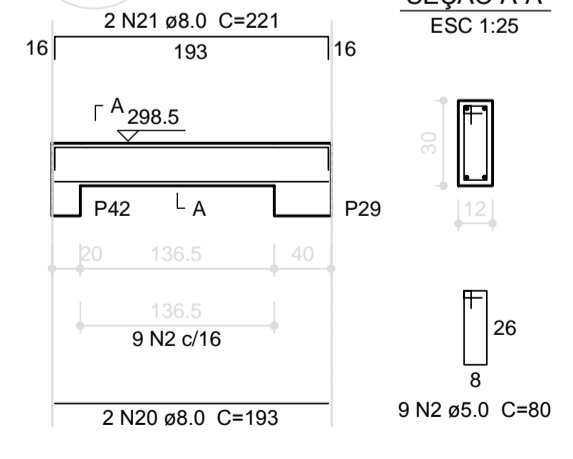
V19
ESC 1:50



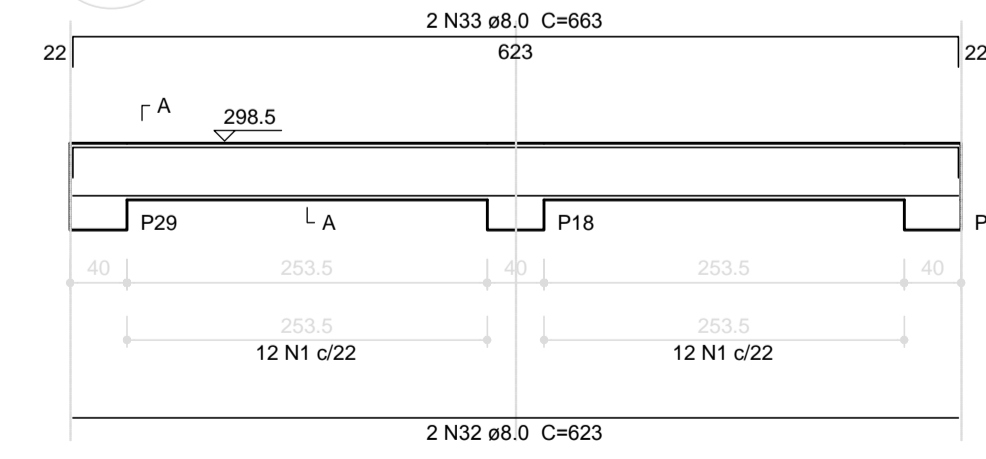
V20
ESC 1:50



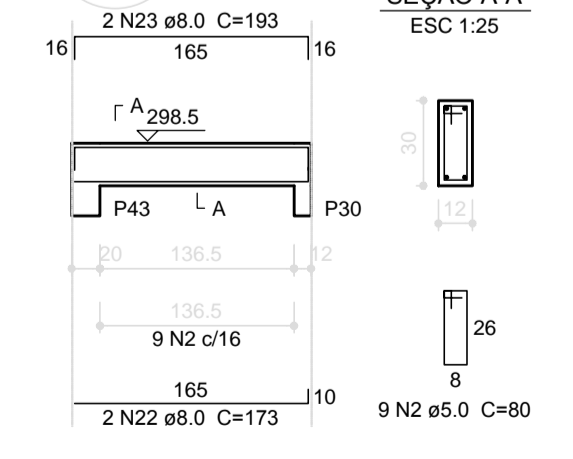
V21
ESC 1:50



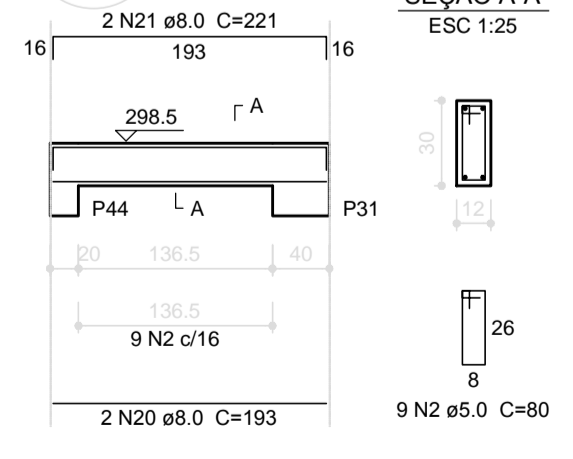
V22
ESC 1:50



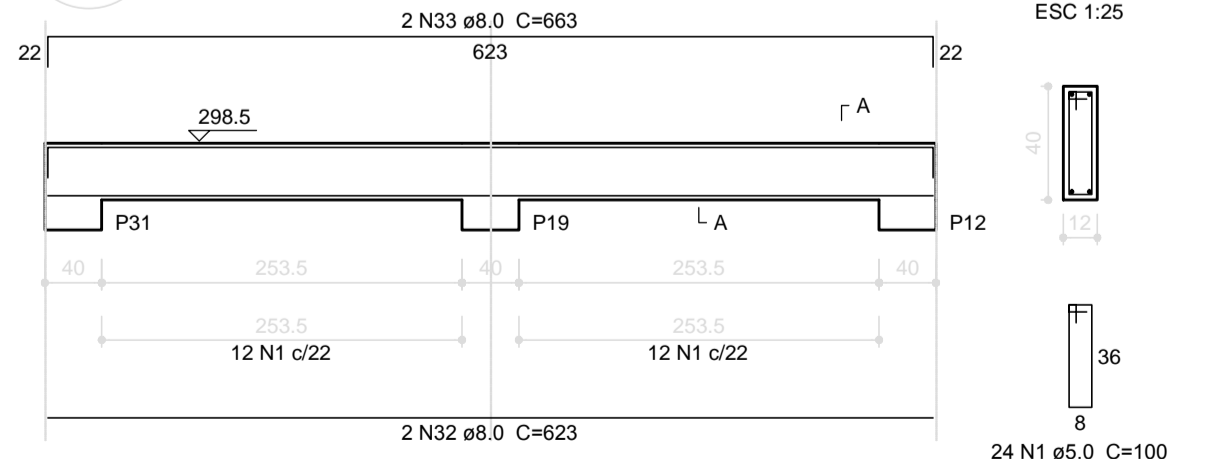
V23
ESC 1:50



V24
ESC 1:50



V25
ESC 1:50



1 VIGAS NÍVEL 298.5
ESCALA: INDICADA

FND E

Ministério da Educação

BRASIL

PROJETO PADRÃO - FNDE

MUNICÍPIO - UF: _____

PROPRIETÁRIO: _____

ENDEREÇO: _____

PROPRIETÁRIO: _____

RESP. TÉCNICO: _____ CAU/ CREA _____

DLFO: _____ CAU/ CREA _____

RA: _____

OBSERVAÇÕES: _____

ESCOLA 4 SALAS DE AULA
PROJETO DE ESTRUTURA

COORDENAÇÃO CGEST - Coordenação Geral de Infraestrutura Educativa	BLOCO PEDAGÓGICO VIGAS NÍVEL 298.5	SCV
REVISÃO R.02	ESCALA INDICADA	PRANCHA 05/31
FORMATO A1 (841x594)	DATA EMISSÃO FEVEREIRO/2014	