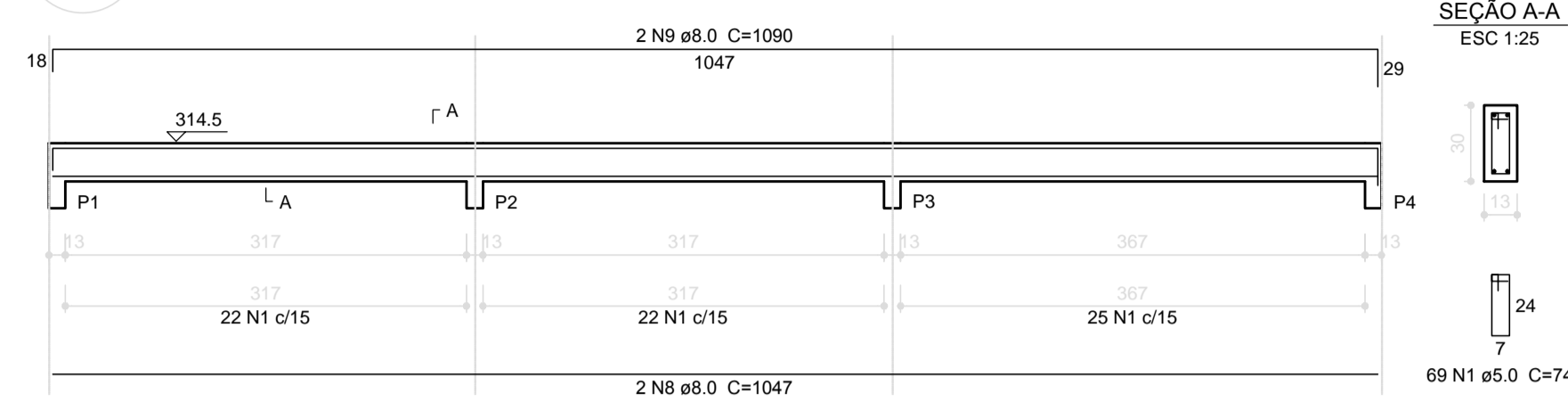
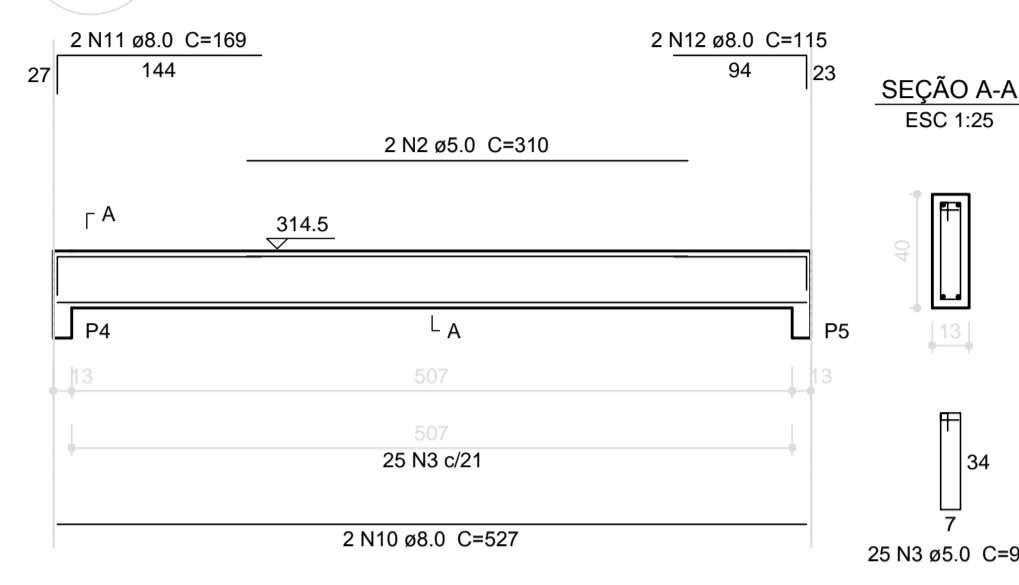


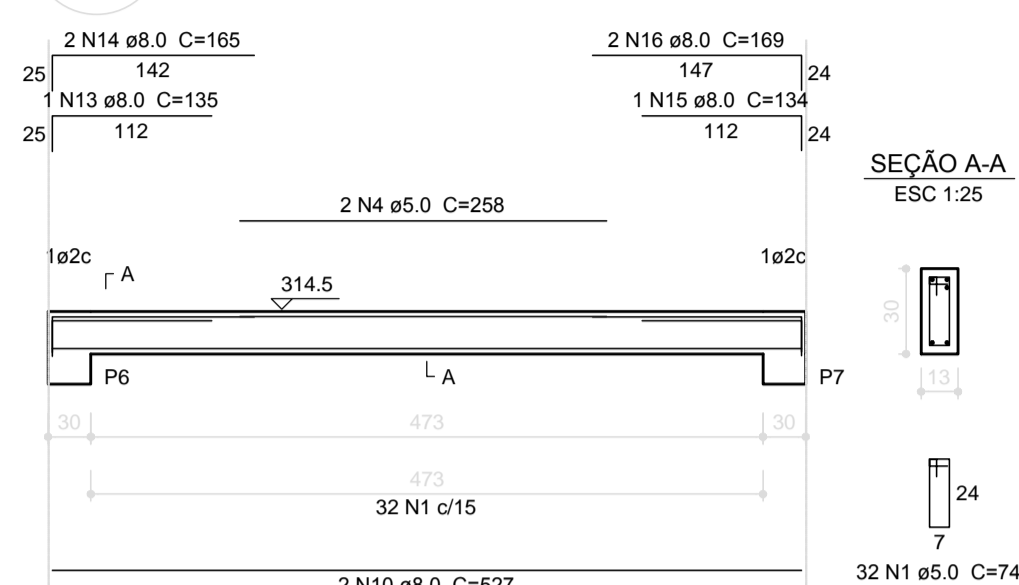
V1
ESC 1:50



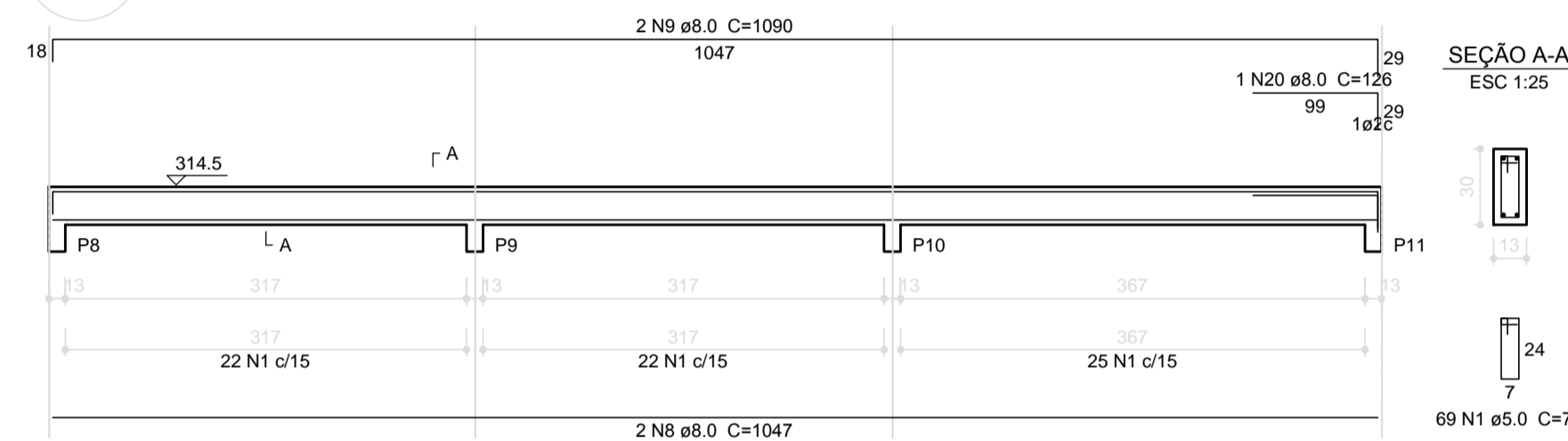
V2
ESC 1:50



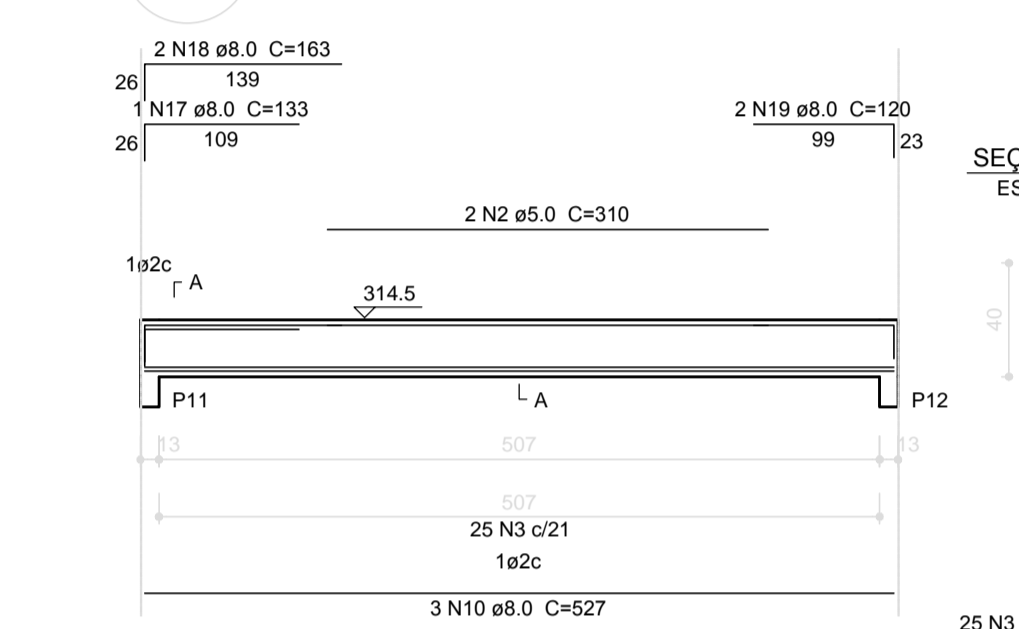
V3
ESC 1:50



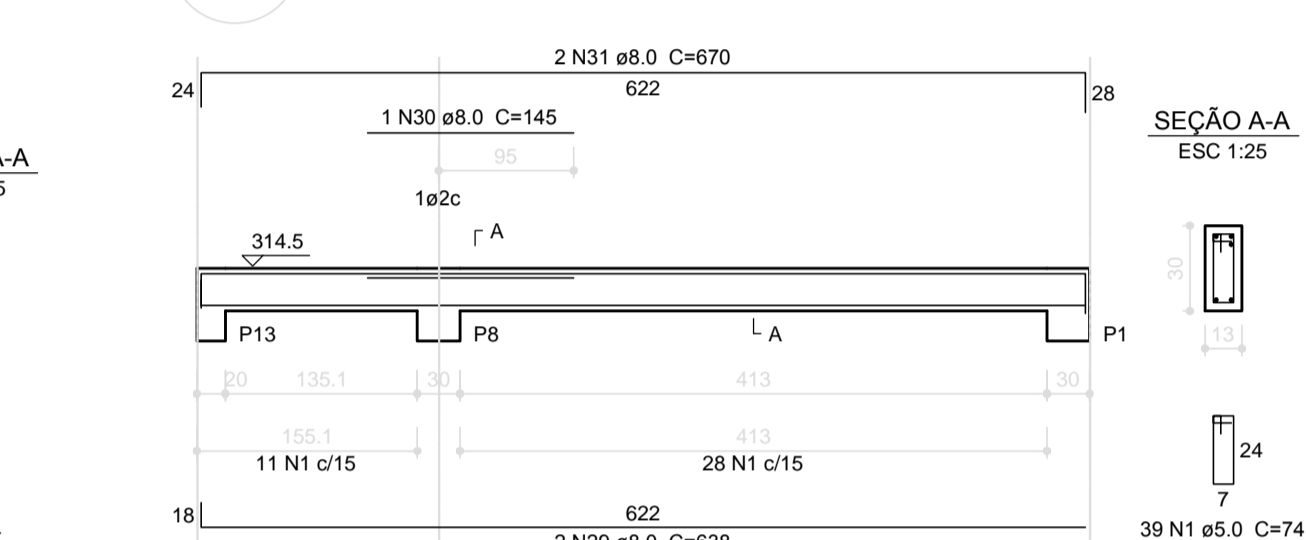
V4
ESC 1:50



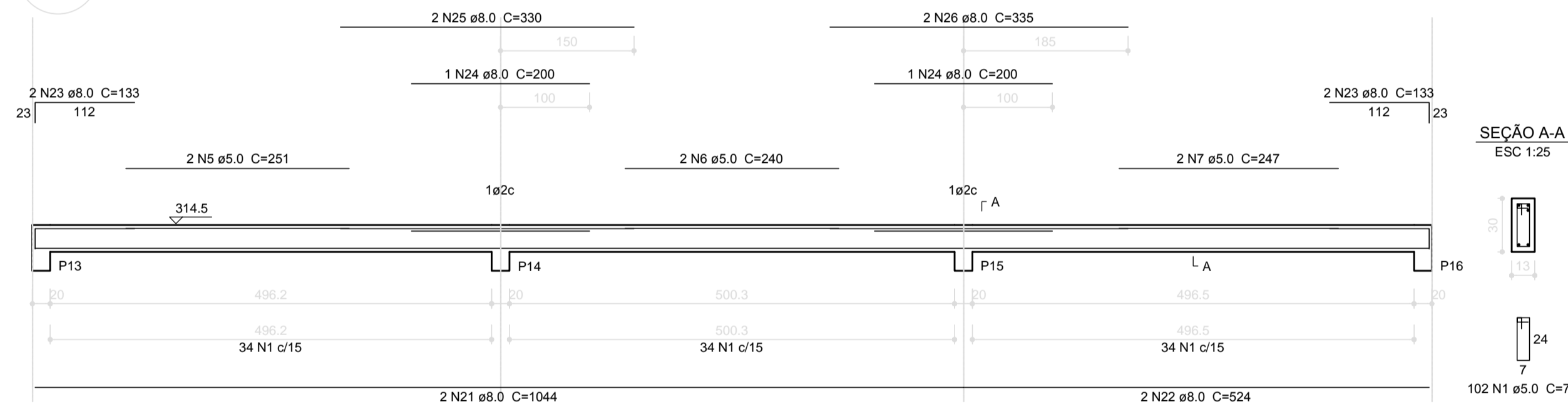
V5
ESC 1:50



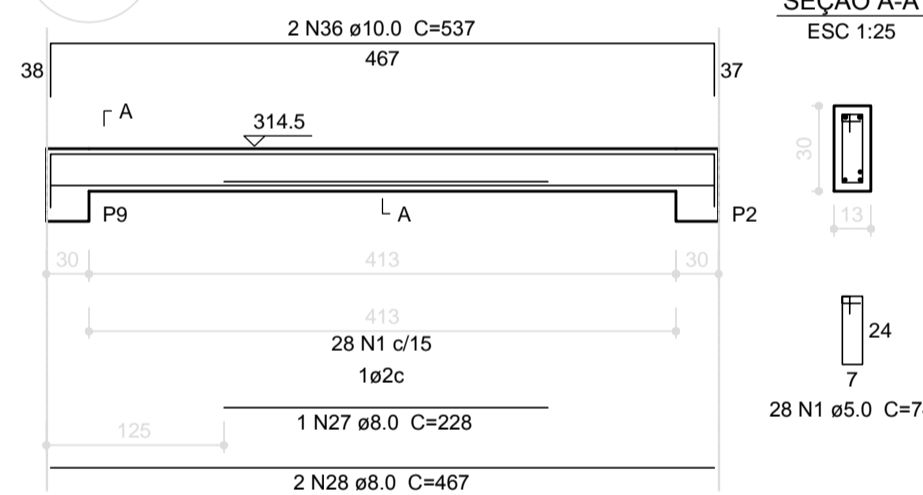
V7
ESC 1:50



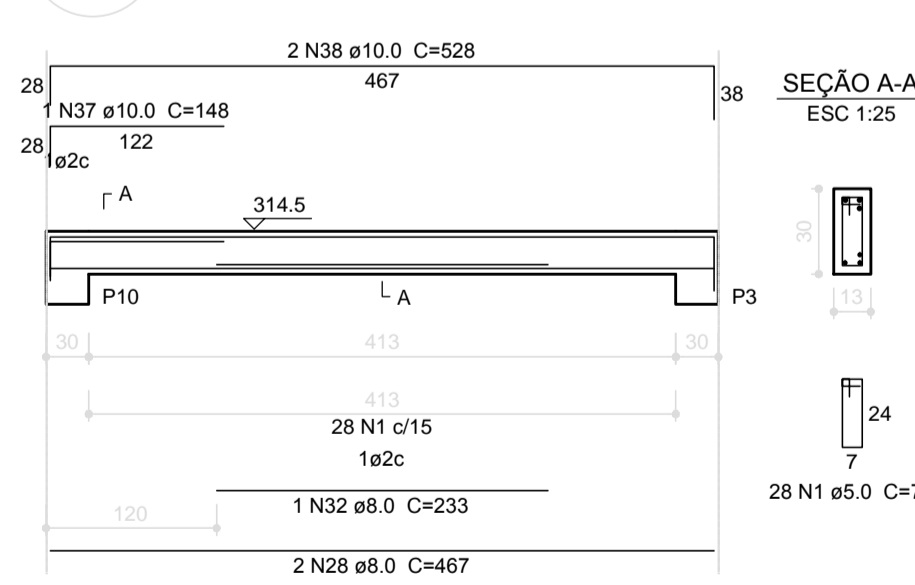
V6
ESC 1:50



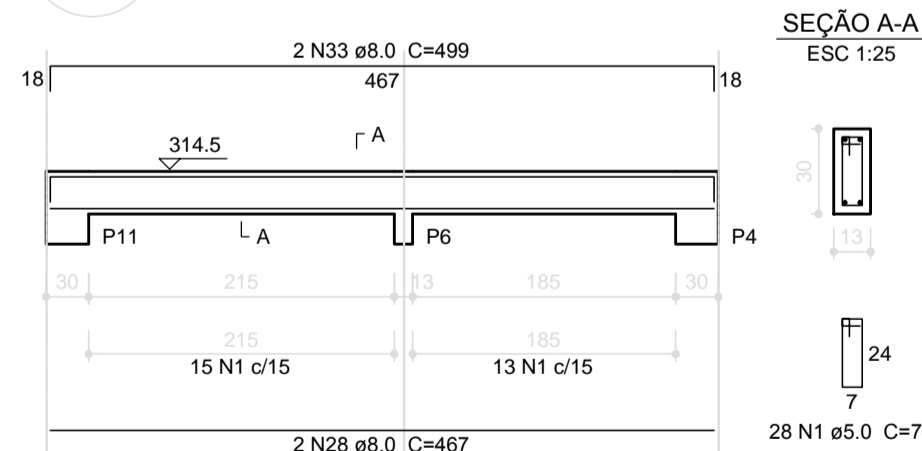
V8
ESC 1:50



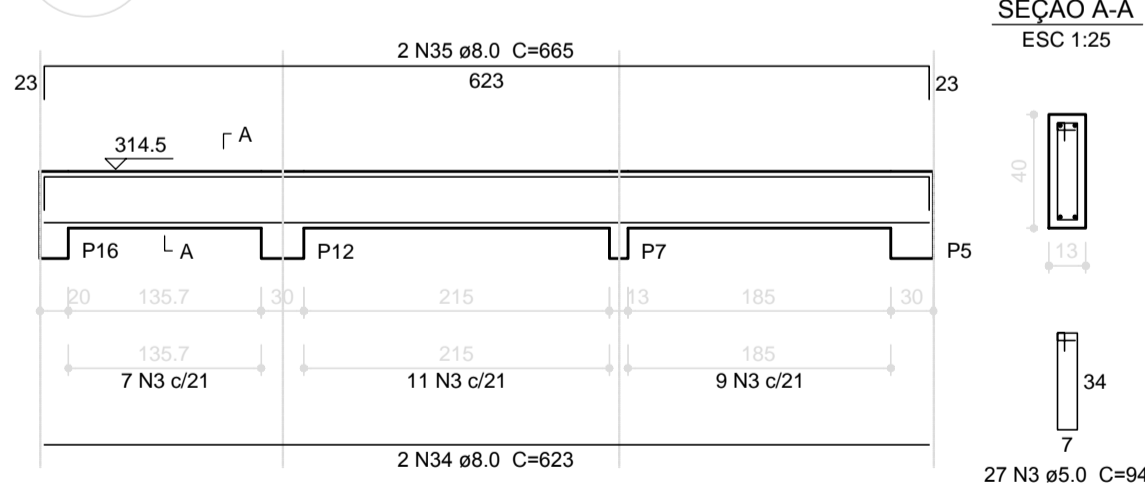
V9
ESC 1:50



V10
ESC 1:50



V11
ESC 1:50



Relação do aço

CAÇO	N	DIAM (mm)	QUANT (Barras)	UNIT (cm)	C.TOTAL (cm)
CA60	1	5.0	395	74	29230
	2	5.0	4	310	1240
	3	5.0	77	94	7238
	4	5.0	2	258	516
	5	5.0	2	251	502
	6	5.0	2	240	480
	7	5.0	2	247	494
CA50	8	8.0	4	1047	4188
	9	8.0	4	1090	4360
	10	8.0	7	527	3689
	11	8.0	2	169	338
	12	8.0	2	115	230
	13	8.0	1	135	135
	14	8.0	2	165	330
	15	8.0	1	134	134
	16	8.0	2	169	338
	17	8.0	1	133	133
	18	8.0	2	163	326
	19	8.0	2	120	240
	20	8.0	1	126	126
	21	8.0	2	1044	2088
	22	8.0	2	524	1048
	23	8.0	4	133	532
	24	8.0	2	200	400
	25	8.0	2	330	660
	26	8.0	2	335	670
	27	8.0	1	228	228
	28	8.0	6	467	2802
	29	8.0	2	638	1276
	30	8.0	1	145	145
	31	8.0	2	670	1340
	32	8.0	1	233	233
	33	8.0	2	499	998
	34	8.0	2	623	1246
	35	8.0	2	665	1330
	36	10.0	2	537	1074
	37	10.0	1	148	148
	38	10.0	2	528	1056

Resumo do aço

CAÇO	DIAM (mm)	C.TOTAL (m)	PESO + 10 % (kg)
CA50	8.0	295.7	128.3
CA60	10.0	22.8	15.4
CA60	5.0	397	67.3
PESO TOTAL (kg)			
CA50		143.8	
CA60		67.3	

Volume de concreto (C-25) = 3.32 m³
Área de forma = 61.45 m²

PROJETO PADRÃO - FNDE

MUNICÍPIO - UF: _____
 PROPRIETÁRIO: _____
 ENDEREÇO: _____
 PROPRIETÁRIO: _____
 RESP. TÉCNICO: _____ CAU/ CREA _____

DLFO: _____ CAU/ CREA _____
 RA: _____
 OBSERVAÇÕES: _____

ESCOLA 4 SALAS DE AULA
PROJETO DE ESTRUTURA

COORDENAÇÃO CGEST - Coordenação Geral de Infraestrutura Educacional	BLOCO DE SERVIÇO VIGAS NÍVEL 298.5	SCV
REVISÃO R.02	ESCALA INDICADA DATA EMISSÃO FEVEREIRO/2014	PRANCHA 15/31

1 VIGAS NÍVEL 298.5
ESCALA: INDICADA